

NE 130th Street Infill Station

Project Update & Motion No. M2025-18

System Expansion Committee

4/10/2025



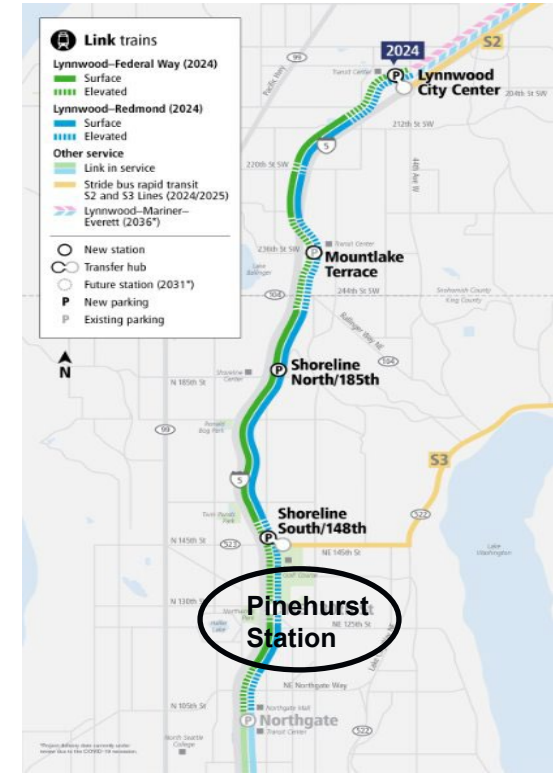
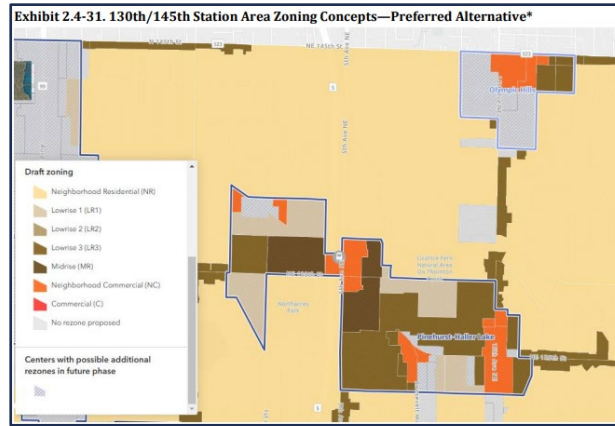
Why are we here

- Update on NE 130th Street Infill Station
- Motion No. M2025-18: Authorizing additional contingencies within the baseline budget

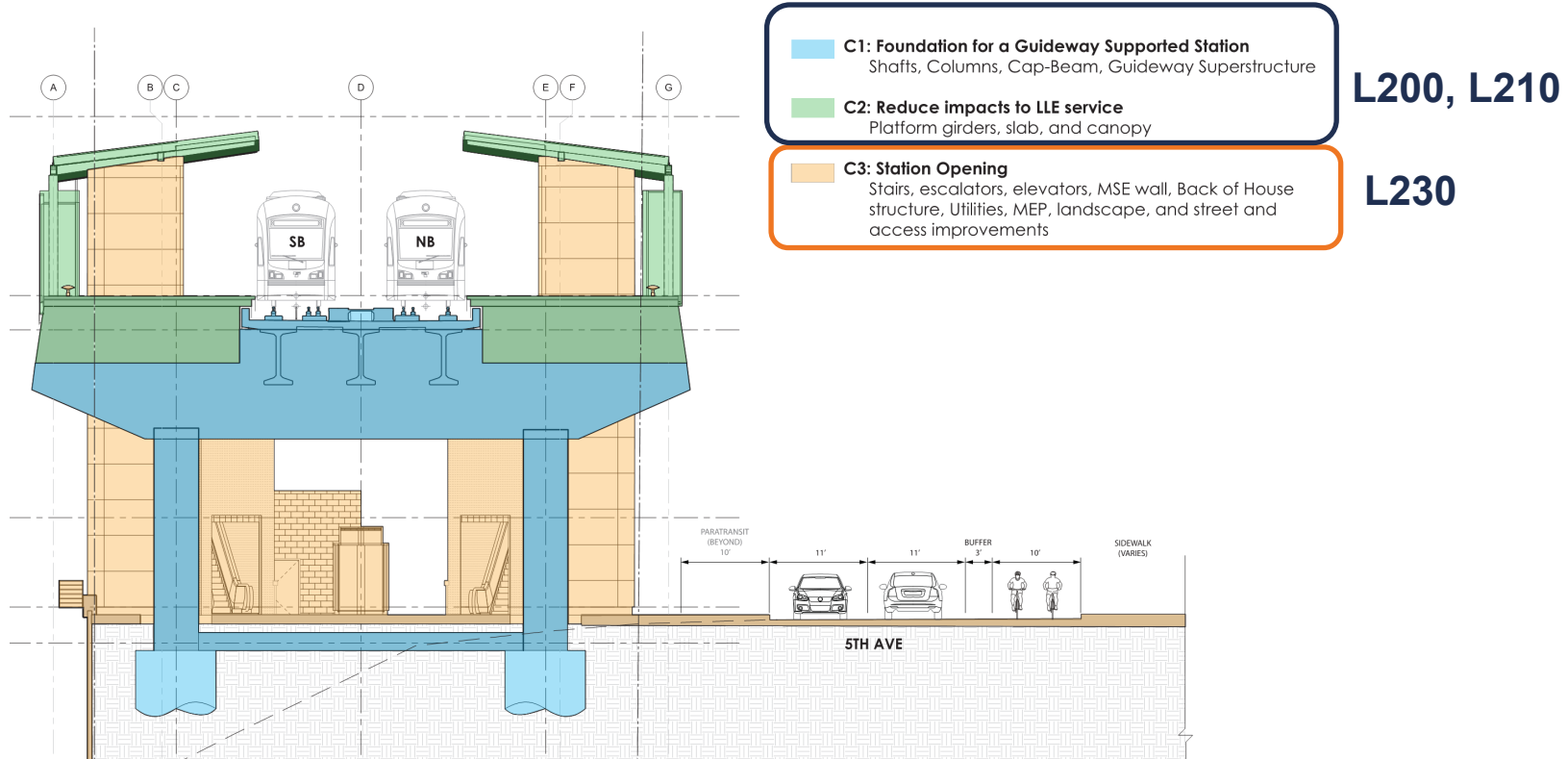


NE 130th Infill Station Background

- NE 130th Infill (“Pinehurst”) Station was added to Lynnwood Link Extension as an infill station in the 2016 ST3 funding package
- First infill station for the agency
- In a growing area in North Seattle; additional access to Light Rail

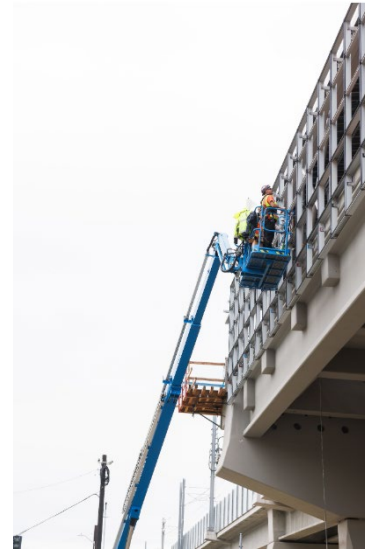


Pinehurst Station Background



Pinehurst Station Update

- Construction on station platforms and plaza progressing well
- Quality construction; risks minimized
- Work focused on critical path civil to systems handover



Pinehurst Station Update – Infill Specific



Artist: Romson Bustillo



- Safety wall separating trains from workforce
- Coordination with Passenger Impact Program and KC Metro for single tracking to safely build the station platform roof, stairs, flooring, and signage

Motion No. M2025-18

- Authorizes CEO to execute \$12M in additional contingencies to support remaining work
- Allows changes to contracts/agreements to take timely action on unforeseen requirements to maintain schedule for revenue service
 - Design; Construction; Construction Management; Signage; Construction Services with WSDOT and Seattle
- Contingency funds are all within the Baseline Budget

Financial Snapshot

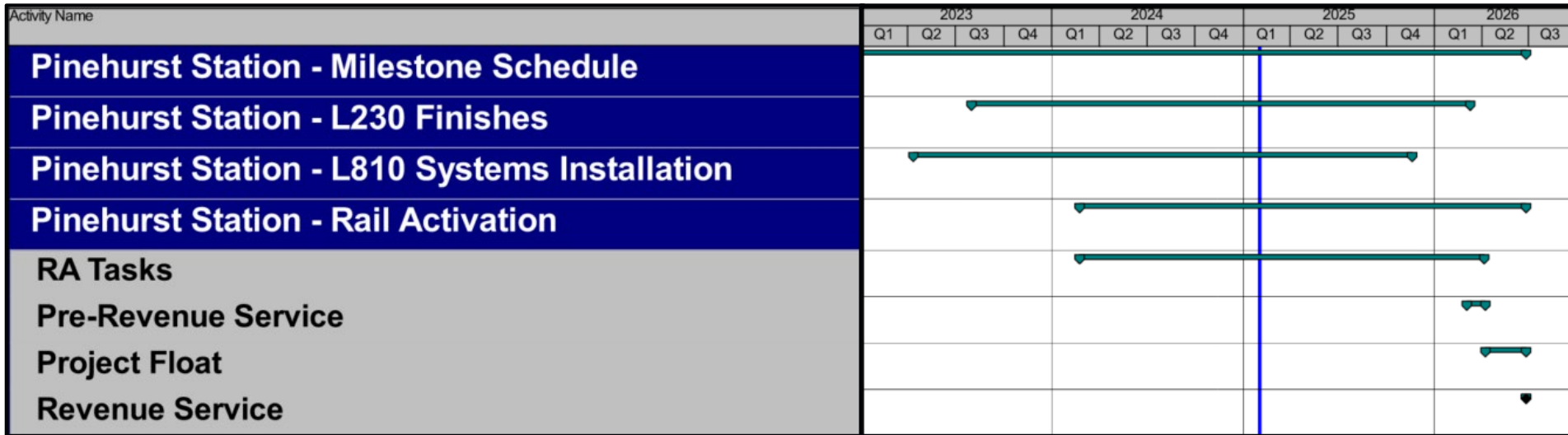
Project Budget	\$240 M
Committed	\$183 M
Incurred	\$120 M

- Year of Expenditure \$
- Financials and progress as of February 2025

- Project is within baseline budget
- Project is 64% complete
- Pinehurst current forecast opening - end of Q2 2026

Schedule to Complete

- Civil and Systems construction scheduled to finish Q1 2026 & Q4 2025 respectively
- Project is within baseline schedule, forecast to open end of Q2 2026



Today's action:

- Motion No. M2025-18: Authorizes the chief executive officer to increase certain NE 130th Street Infill Station contract and/or agreement amounts as necessary, for a total authorized cumulative increase not to exceed \$12,000,000, all within the NE 130th Street Infill Station approved baseline budget.

Thank you.



 [soundtransit.org](https://www.soundtransit.org)

